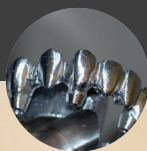


Metals (posts)



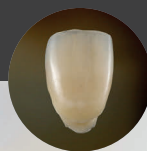
Zirconia



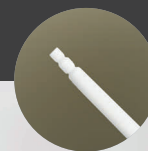
Implant abutments



Glass ceramics



Glass fibre posts



Indirect composites








# PROSTHETIC PRETREATMENT

## INFOGRAPHIC<sup>1</sup>

Pretreatment guide for  
prosthetic substrates

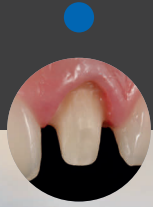


### PROSTHETIC PRETREATMENT<sup>1</sup>

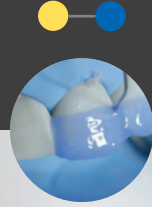
-  Sandblast, rinse & dry
-  Apply & dry CLEARFIL™ CERAMIC PRIMER PLUS
-  Apply hydrofluoric acid, rinse & dry<sup>2</sup>
-  Apply 35% phosphoric acid, rinse & dry
-  Sandblast, apply 35% phosphoric acid, rinse & dry

<sup>1</sup>For detailed pretreatment procedures please refer to the product instructions for use (IFU).  
<sup>2</sup>If you are a clinician and your lab has already applied hydrofluoric acid, simply use phosphoric acid to clean and activate the ceramic surface.

Enamel, dentine,  
existing composites &  
metals



Uncut enamel



**TOOTH PRETREATMENT<sup>1</sup>  
USING PANAVIA™ V5**

- Apply 35% phosphoric acid, rinse & dry
- Apply PANAVIA™ V5 Tooth Primer for 20 sec. & dry

**CEMENTATION OPTIONS USING PANAVIA™**

**PANAVIA™ V5**

Universal, esthetic, adhesive resin cement

- (1) After initial try-in of the prosthetic, follow the prosthetic pretreatment infographic on the reverse page then;
- (2) Apply PANAVIA™ V5 Tooth Primer to the tooth and leave for 20 sec. & dry.
- (3) Apply PANAVIA™ V5 resin cement paste to the pretreated prosthetic and seat. Tack cure and clean up. Complete final light curing of all margins.



**PANAVIA™ SA CEMENT PLUS AUTOMIX**

Self-adhesive, self-etch resin cement

- (1) After initial try-in of the prosthetic, follow the prosthetic pretreatment infographic on the reverse page then;
- (2) Apply PANAVIA™ SA CEMENT PLUS AUTOMIX resin cement paste to the prosthetic and seat. Tack cure and clean up. Complete final light curing of all margins.



\*CLEARFIL™ and \*PANAVIA™ are trademarks of Kuraray Co., Ltd.  
Please carefully read the instructions for use (IFU), prior to using the product.  
J. Morita Corporation Australia & New Zealand are the copywriters of this guide content on behalf of Kuraray Noritake Dental Inc.